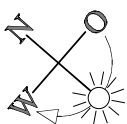
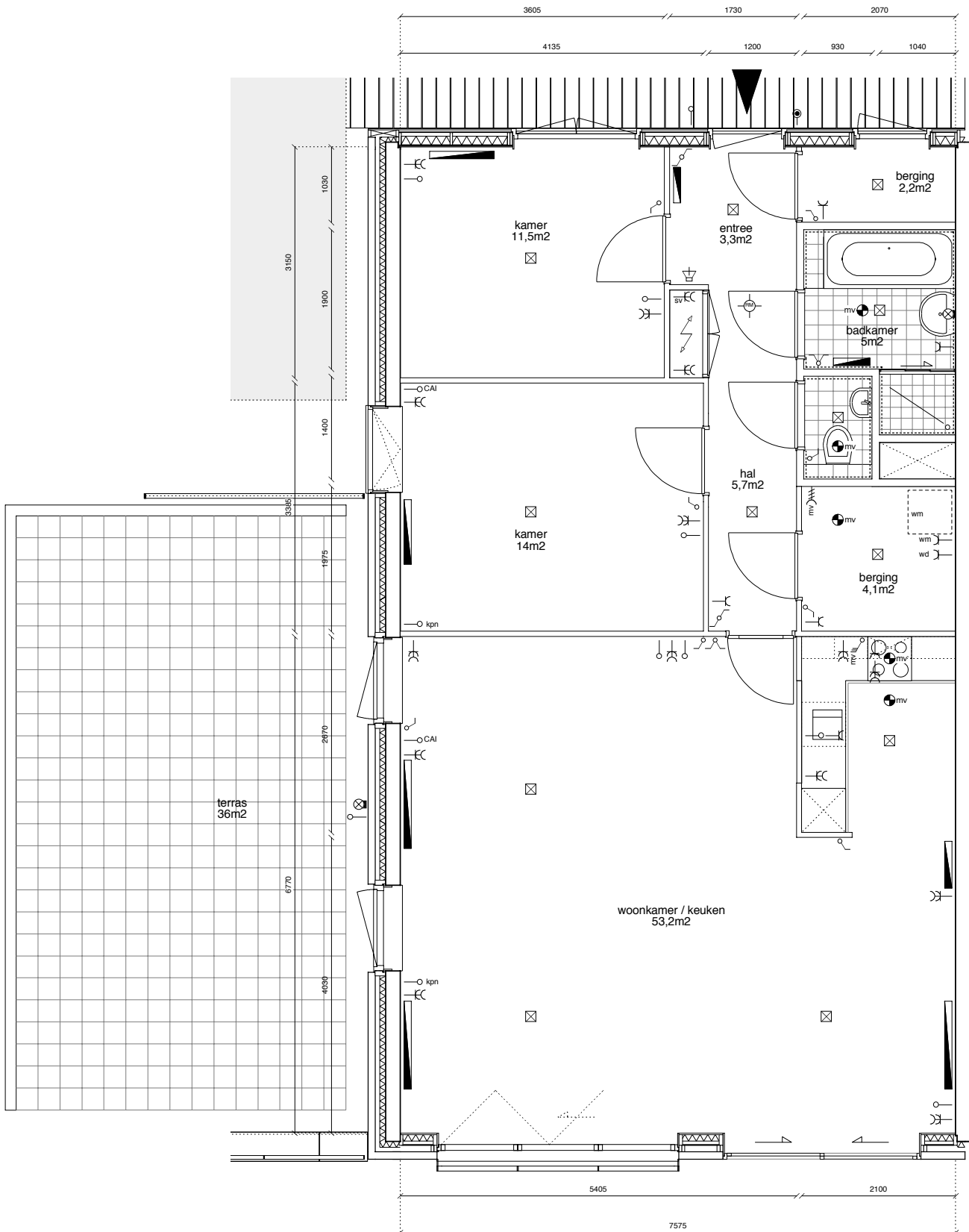


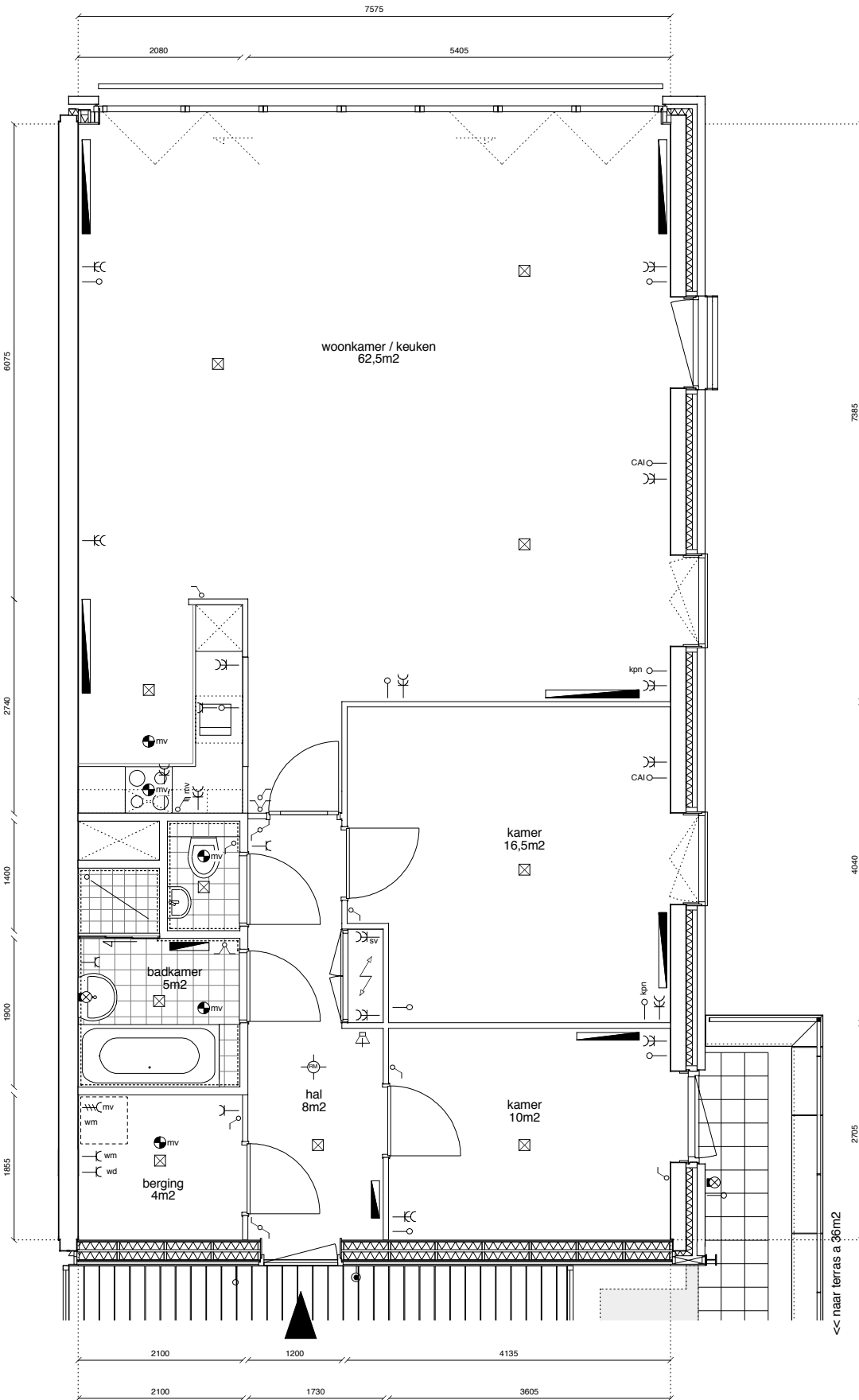
**huisnummers
52, 58, 60**

(type Schakel) tweede verdieping
 appartement zuidzijde
 gbo : 108m²
 terras : 36m²



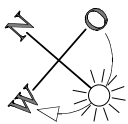
**huisnummers
200, 202**

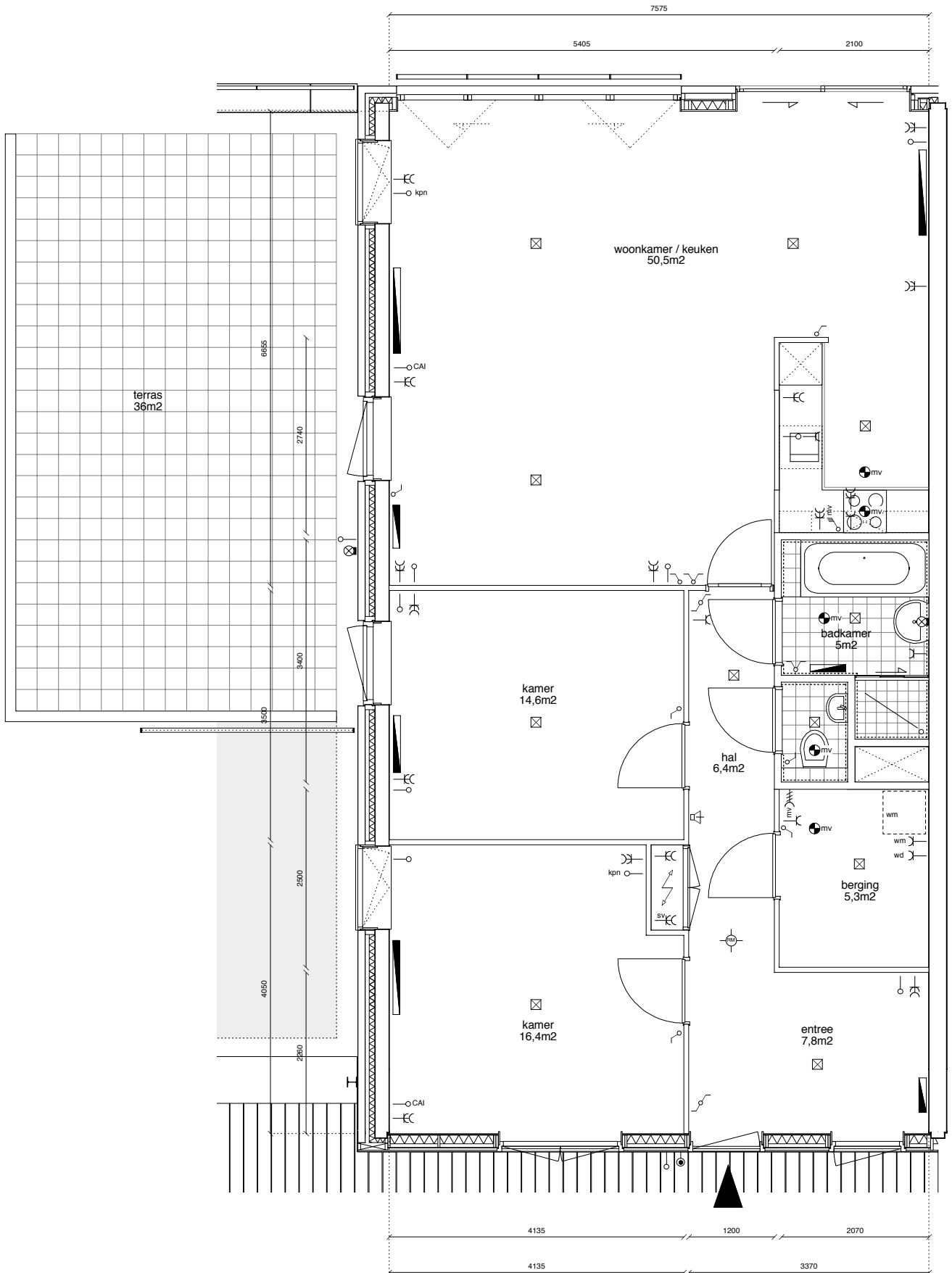
(type Pampus) tweede verdieping
 appartement zuidzijde
 gbo : 101m2
 terras : 36m2



huisnummers
50, 196

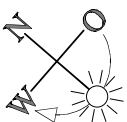
(type Kotter) tweede verdieping
 appartement hoek haven- / zuidzijde
 gbo : 108m²
 terras : 36m²

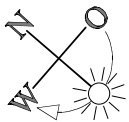
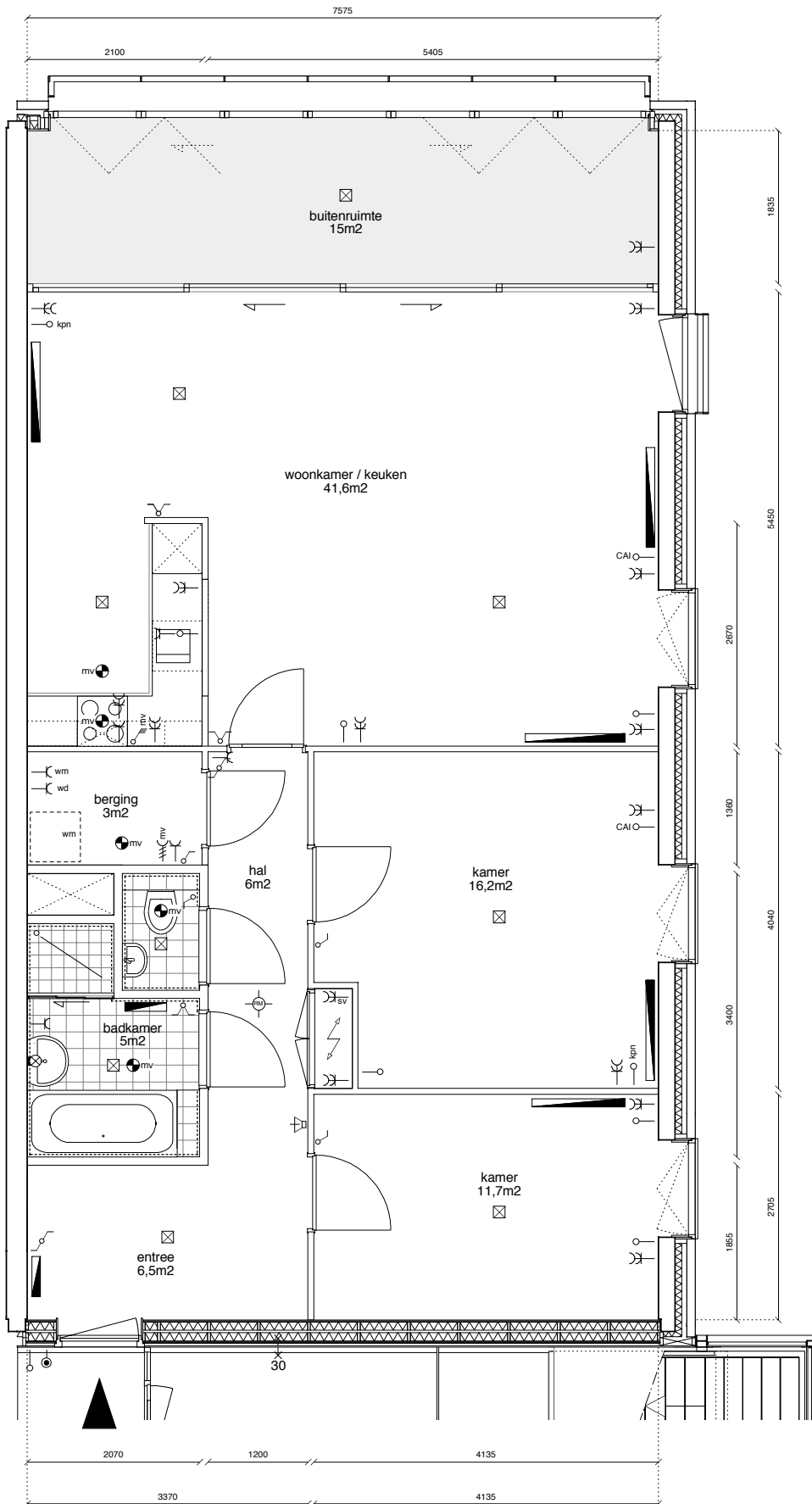




**huisnummers
198, 204, 206**

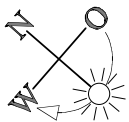
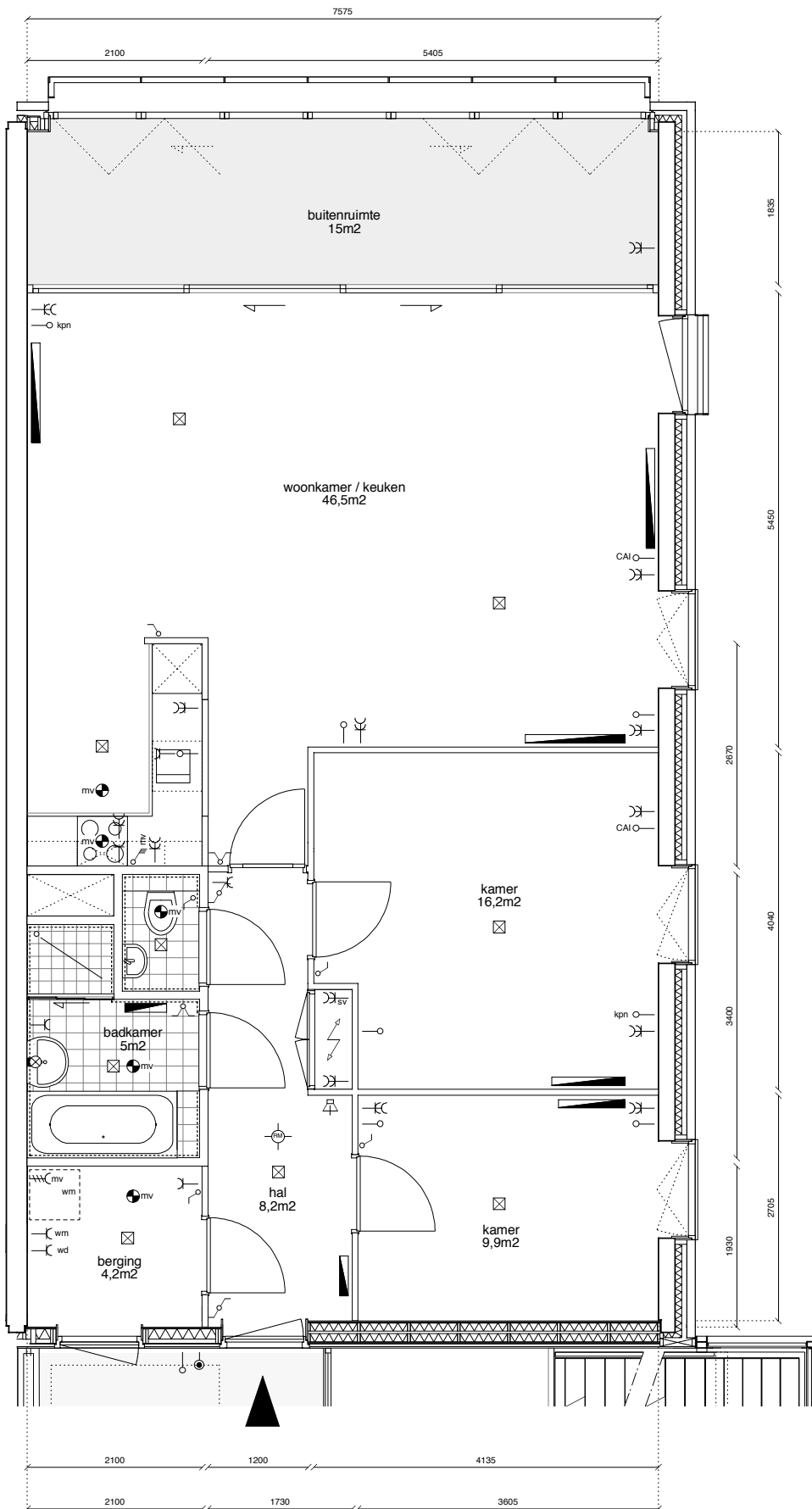
(type Schoener) tweede verdieping
 appartement diep havenzijde
 gbo : 108m²
 terras : 36m²





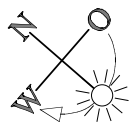
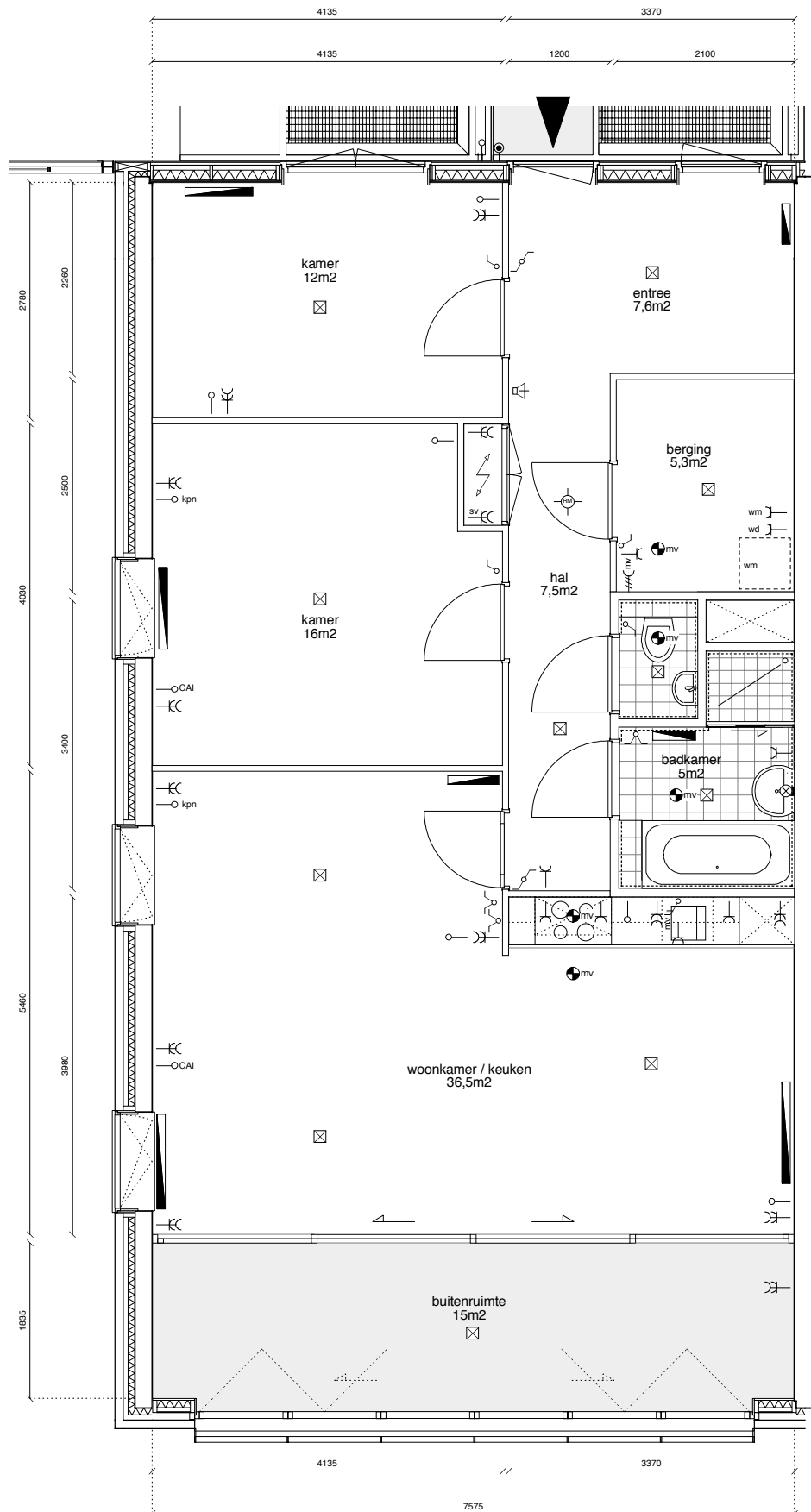
huisnummers
62, 208

(type Hornet) derde verdieping
appartement hoek haven-/ zuidzijde
gbo : 92m²
buitenruimte : 15m²



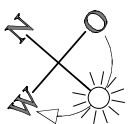
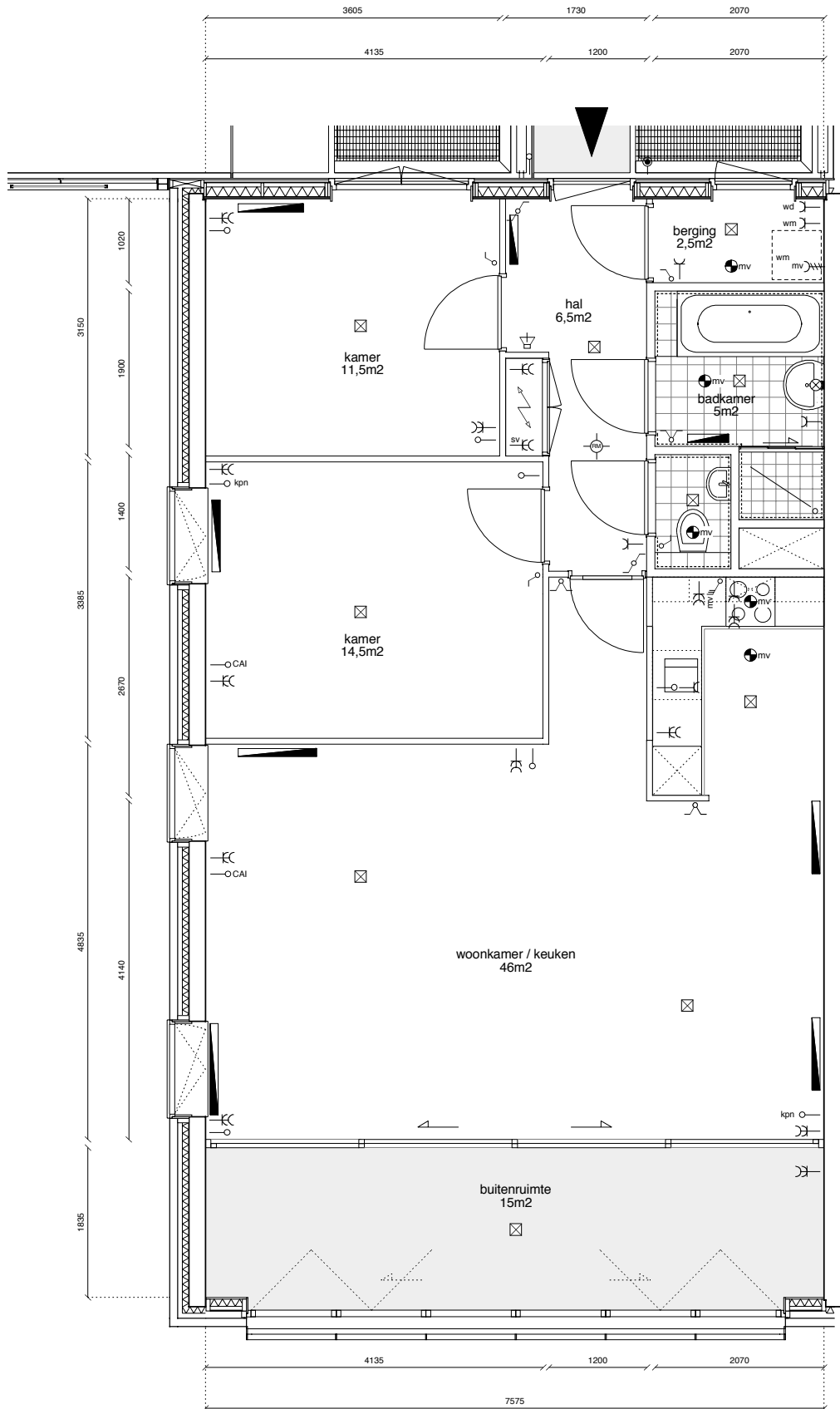
huisnummers
74, 86, 98, 110, 220, 232, 244, 256

(type Laser) 4e t/m 7e verdieping
 appartement hoek haven-/ zuidzijde
 gbo : 92m²
 buitenruimte : 15m²



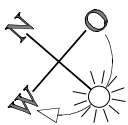
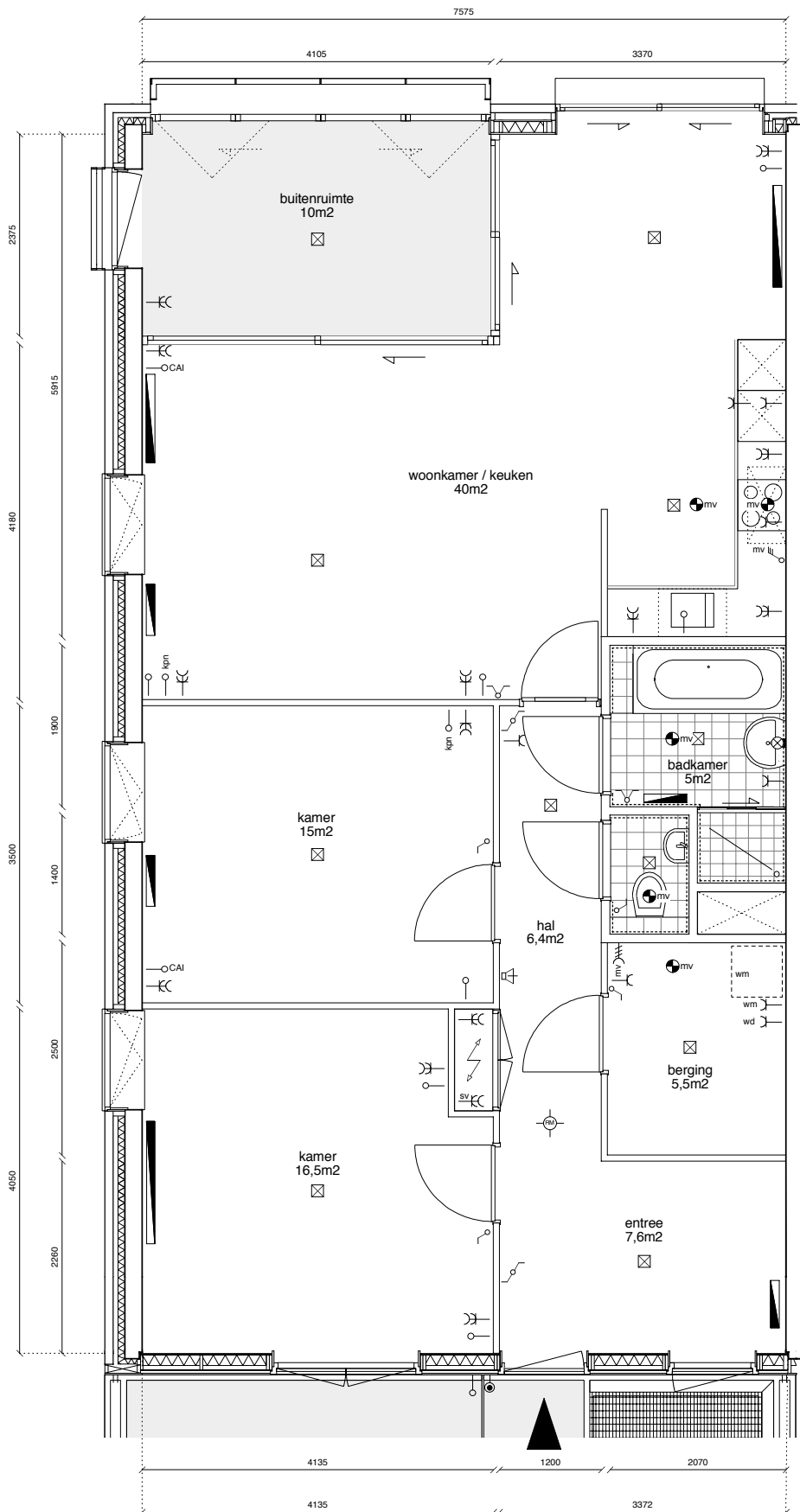
huisnummers
64, 70, 72, 82, 84, 88, 94, 100, 108, 118

(type Valk) 3e t/m 7e verdieping
 appartement diep zuidzijde
 gbo : 92m²
 buitenruimte : 15m²



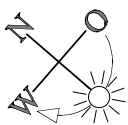
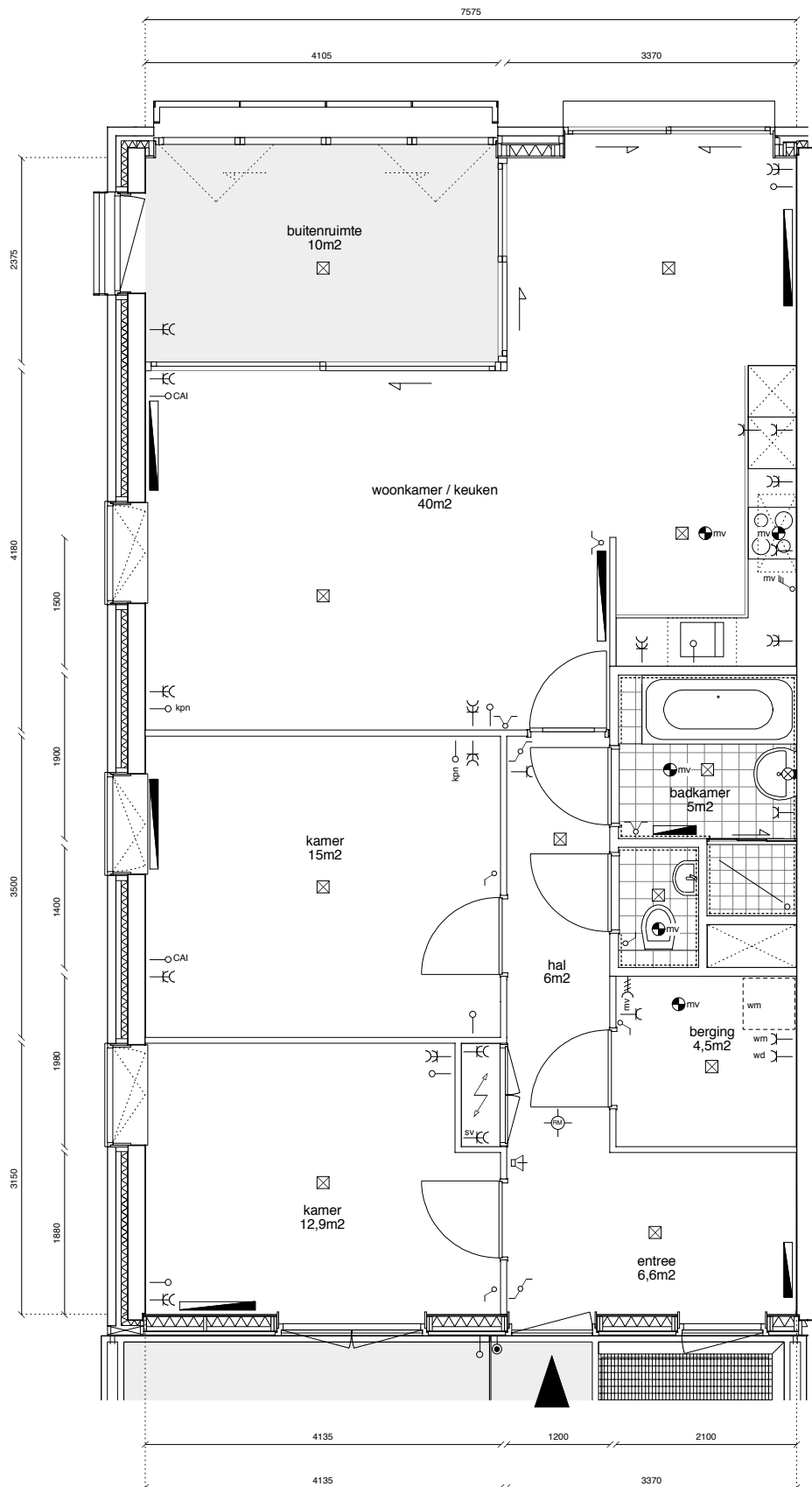
huisnummers
212, 214, 226, 26, 248, 250, 262

(type Catamaran) 3e t/m 7e verdieping
 appartement ondiep zuidzijde
 gbo : 88m²
 buitenruimte : 15m²



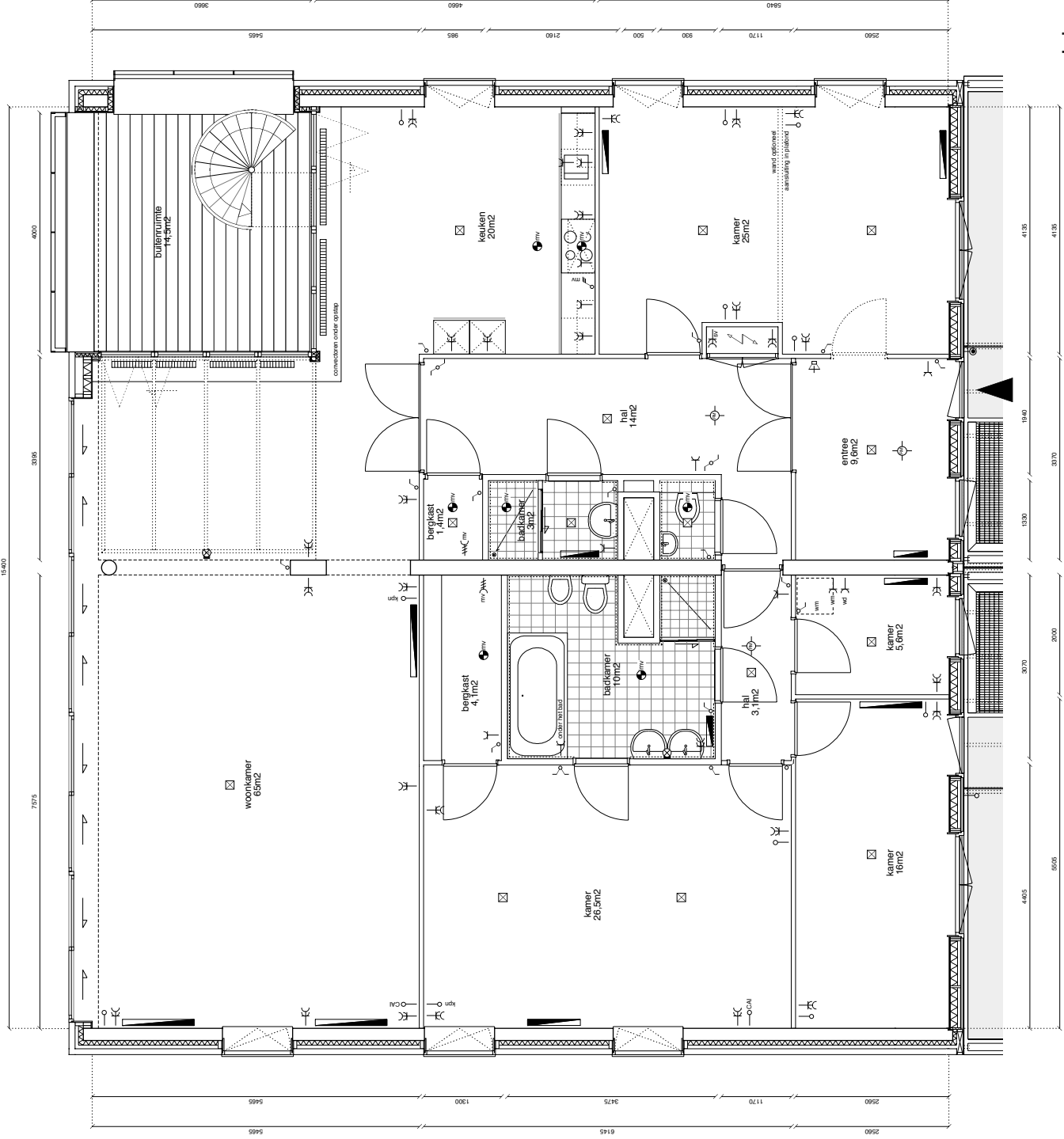
huisnummers
 210, 216, 218, 222, 228, 230, 76, 234,
 240, 242, 96, 246, 252, 254, 106, 112, 120

(type Randmeer) 3e t/m 7e verdieping
 appartement diep havenzijde
 gbo : 98m²
 buitenruimte : 10m²



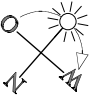
huisnummers
66, 68, 78, 80, 224, 90, 92, 238, 102, 140, 260

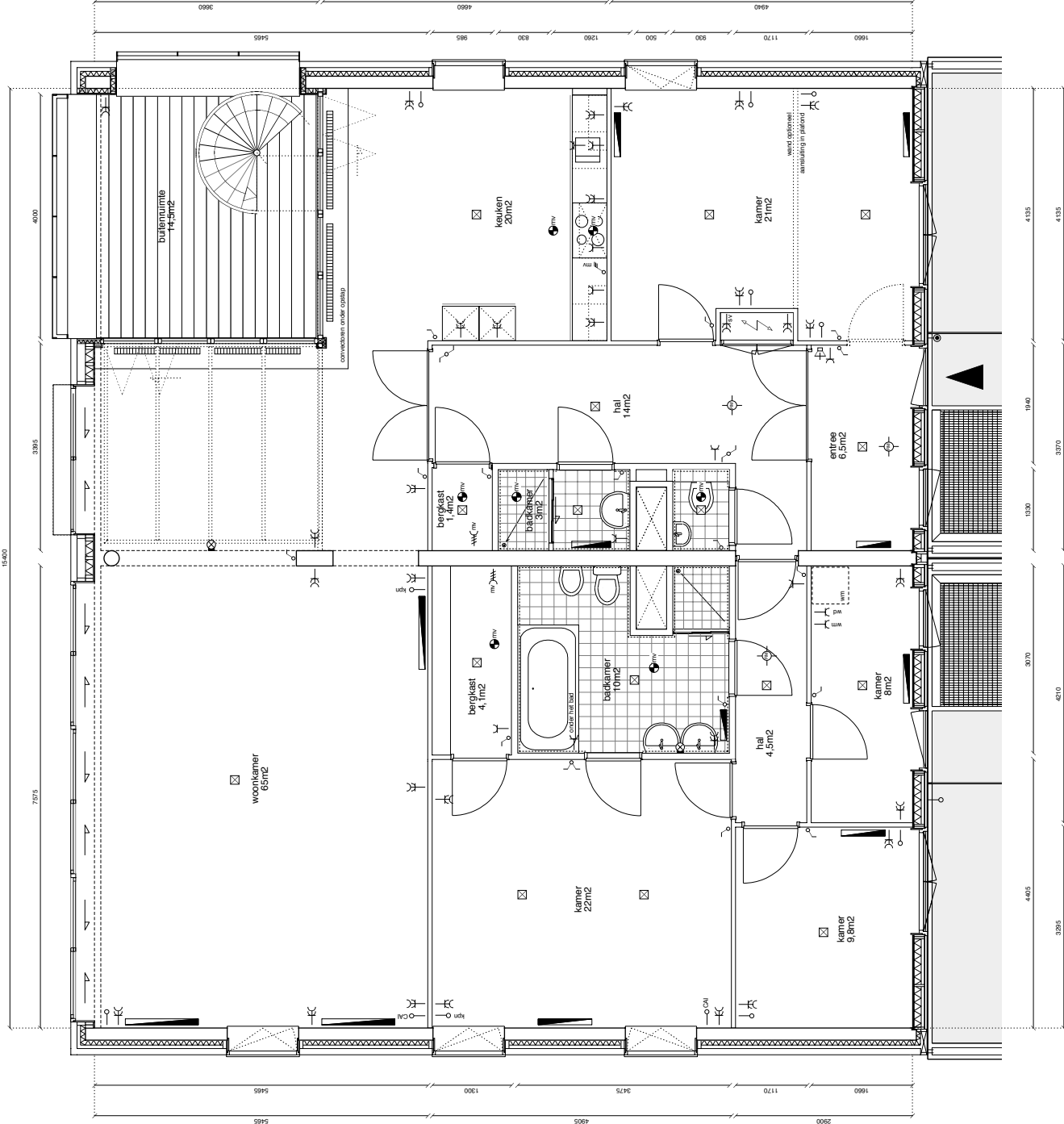
(type Spanker) 3e t/m 7e verdieping
 appartement ondiep havenzijde
 gbo : 92m²
 buitenruimte : 10m²



huisnummer
264

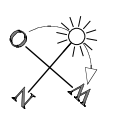
(type Vrijheid) 7e verdieping
penthouse diep havenzijde
gbo : 207m²
buitenruimte : 14,5m²
dakterras : ca. 70m²

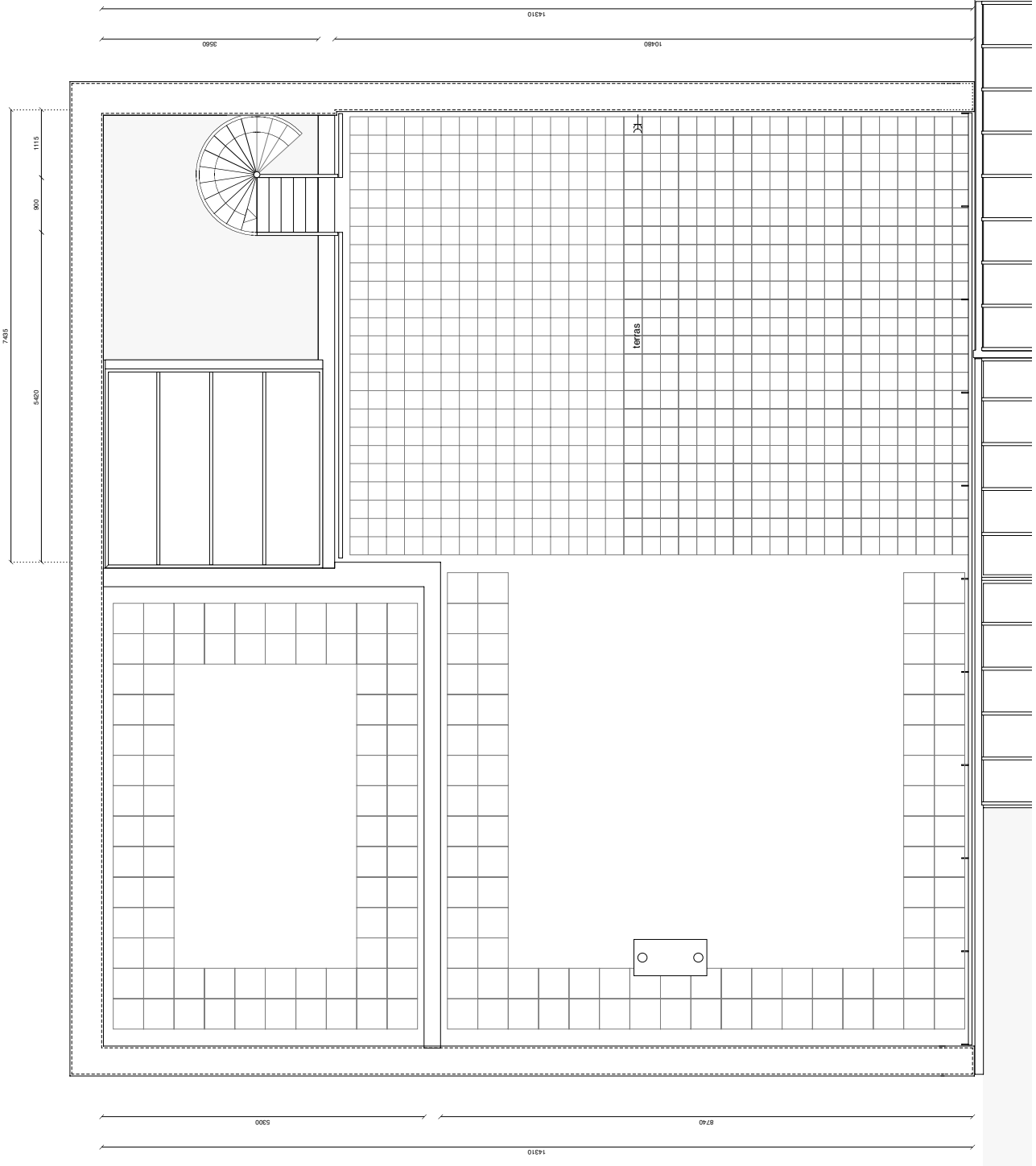




huisnummer
116

(type Regenboog) 7e verdieping
penthouse ondiep havenzijde
gbo : 192m2
buitenruimte : 14,5m2
dakterras : ca. 65m2





huisnummers
116, 264, 256
 (type Regenboog, Vrijheid en Stern) 8e verdieping
 dakterras penthouse havenzijde
 (getekend dakterras Ph)
 dakterras Ph / Pd : ca.72m2
 dakterras Po : ca.67m2

